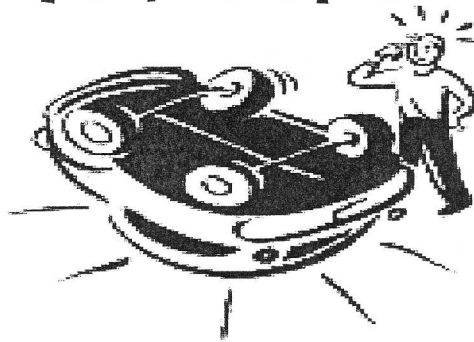


ALBANY SPEEDWAY CLUB

LITTLE CAR DEMO DERBY

SATURDAY 17th November 2012



info pack

contact Jeff Baker: 0488 538 55

e-mail: debandjeff@hotmail.com

Albany speedway

Little car demo

Basic need's

1; 4 cyl front wheel drive car

2; motor not to exceed 1.8litre

3; Bar between door pillar's [back door's okay]

[see rule's for size's]

4; Bar between roof and floor

[see rule's for size's]

5; 6mm plate for driver's door

BAR WORK FOR LITTLE CAR DEMO DERBY

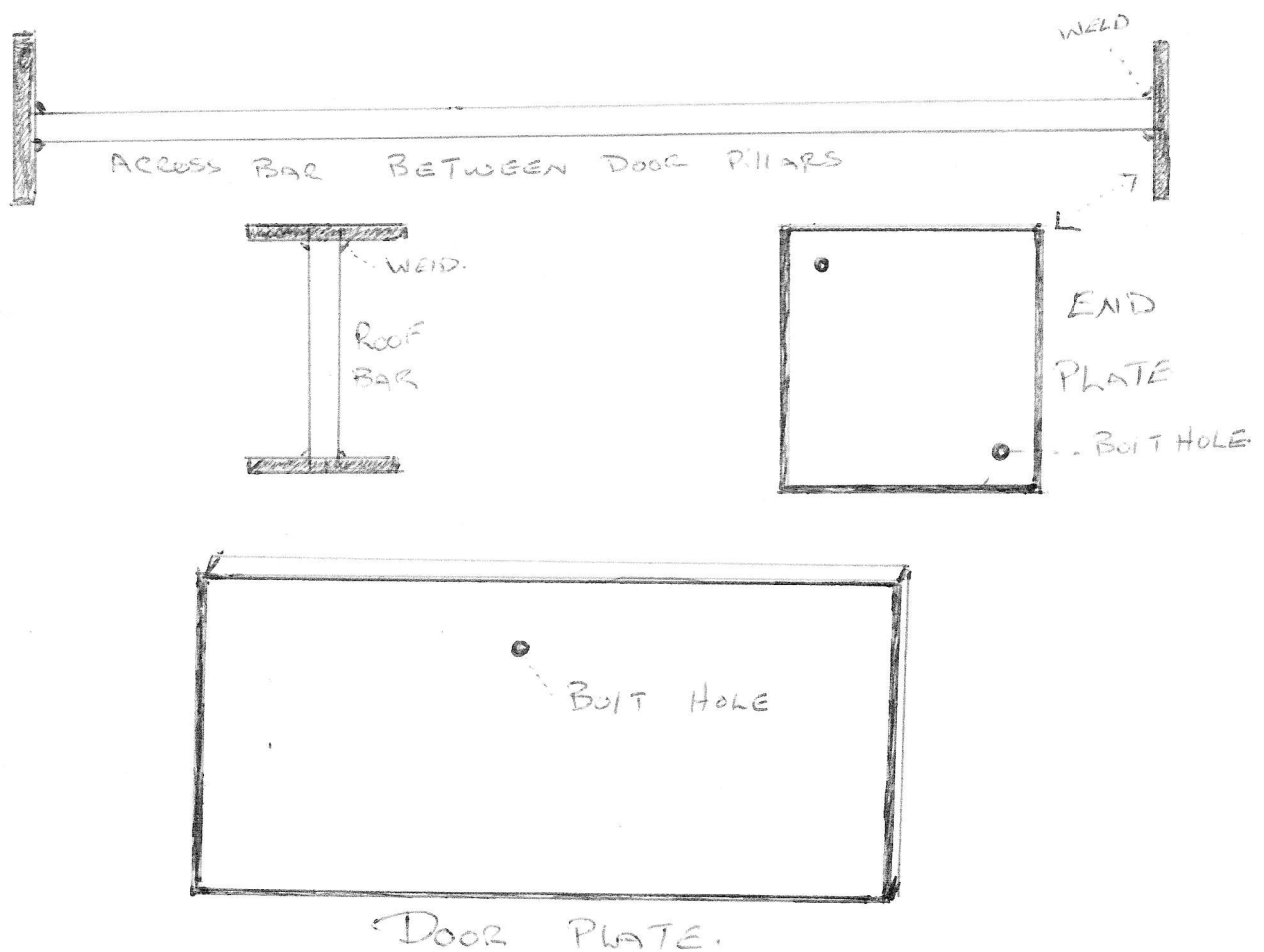
Bars to be 38mm diameter up to 60.3mm diameter/3mm thick. If using pipe, work on 32 nb up to 50 nb medium wall.

End plates to be 100mmx100mm square/5mm or 6mm thick.

Door plate to be 6mm thick and take place of window

All bars to be bolted to car (NOT WELDED)

Bolts to 6mm diameter or thicker



Information Sheet

4 Cylinder Demolition Derbies /Albany Speedway

Vehicles – All vehicles must be in standard condition except for modifications allowed below

- 4 cylinder maximum.
- engine capacity of **1.8 litre** or less.
- Front wheel drive only (eg: Ford Laser, Hyundai Excel, Mazda 323, Daewoo, Suzuki Swift, Daihatsu Charade, Toyota Corolla(some) – not Magna, Toyota Camry, Mazda 626, Ford Telstar or anything bigger than 1.8 litre.

Event Format

- Forwards only
- Standing start with vehicles lined up 4 wide on the start line.
- NO DELIBERATE CRASHING INTO DRIVER'S DOORS (or instant disqualification)
- NO REVERSING INTO OTHER VEHICLES (or instant disqualification)
- Vehicles to remain on the racetrack – cannot use the infield

Preparation

- All glass, to be removed.
- head lights, tail lights to be removed.
- Floor carpet/covering and interior roof hood lining to be removed.
- Tow bars to be completely removed.
- No relieving of guards or panels to allow greater wheel clearance.
- Wheels and tyres not restricted – all wheel weights to be removed.
- Radiators must be of original type and in original position. Fan blades may be removed. No additional storage tanks, top up bottles except for standard fittings.
- Original fuel tank can be used – with a maximum of 20 litres of fuel to be carried. Alternatively a steel jerry can or outboard motor fuel tank can be used. This must be secured to the floor in a safety cradle in the rear passenger compartment and not contain more than 20 litres of fuel. The original tank must be holed. No plastic fuel containers permitted.
- The original fuel line can be used. If an alternative fuel tank is fitted, the original fuel line must be retained from the engine bay to the entrance of the fuel tank, where a flexible fuel line can be used to connect the tank and fuel line.
- Battery can remain in standard position or be relocated to inside of vehicle on passenger side floor. It must be securely mounted with metal straps and covered with rubber matting.
- The bonnet can be secured with a single seat belt strap or a single strip of chain. No bolts, no welding or strengthening of the bonnet, bootlid, mudguards, bumpers or seams.

Safety

- Standard seatbelts are permitted; and properly fitted competition four point harnesses are also permitted and recommended. All belts to be in good condition – no frayed edges.
- A steel plate (6mm) must be slid down the window channel of the driver's door only. The plate cannot protrude above the height of the door skin and must be secured so that it does not fall out in case of a rollover.
- The driver's door and right hand passenger door are to be stitch welded (every 300mm). Driver's door can also be chained around centre pillar.
- A steel bar to be fitted horizontally behind the driver's seat, between the centre pillars or rear doors. Round or square tubing to be at least 38mm x 3 mm with a steel plate (100mm x 100mm) welded to each end for mounting. Plates to be bolted (not welded) to centre pillars or rear doors by 2 bolts (at least 6mm thick) each side and bolted from outside inwards.
- One floor to roof bar is allowed and recommended in the middle of vehicle (in case of rollover).
- Window mesh on front windscreen and driver's door is optional.
- Brakes must be in working order.
- Driver's door to be painted RED with a large WHITE X.
- Inside foam cushioning to protect the driver is permitted and recommended.

Drivers

- NO Passengers permitted in 4 cylinder demo derbies.
- Helmets and neck braces are compulsory.
- Drivers are dressed from head to toe – no exposed skin.

Check List for 4 Cylinder demos Albany 2012

Demo vehicles to be 4 cylinder, front wheel drive, engine size 1.8 litre or smaller.

This is a quick check list only – refer to Demo Rules for all necessary details.

Remove;

- Headlights, tail lights, indicators
- Towbar
- Wheel weights
- Door trims
- All glass (windcreens –front and rear, all side windows)
- Rear seat and passenger front seat
- Carpet
- Hood lining

Check;

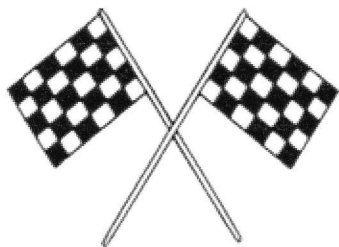
- Drivers seat belt working ok and straps not frayed
- Check drivers seat mounts are tight

Roll bars;

- Fit bar behind driver (horizontal), mounted on door pillars or between rear doors
- Fit a bar floor to roof – behind driver or in centre of vehicle
~~(optional)~~
- Slide steel plate into driver's door (recommend run a bolt through door and plate to hold it in place in case of rollover)
- Stitch weld drivers door and right hand rear door

Other;

- Paint driver's door red with large white X
- Permitted to fit 1 seatbelt or 1 piece of chain to hold down bonnet (optional)
- Permitted to mount battery inside vehicle on floor (optional)



ALBANY SPEEDWAY CLUB

LITTLE CAR DEMO DERBY NOMINATION FORM

I _____ wish to nominate my car and self for the
(full name)

Little Car Demo Derby to be held on 17th November 2012.

My car is a _____
(year) (make) (model)

The car has been barred out according to the rules.

I have/have not got a NASR license. **I AM OVER 16 YEARS OF AGE.**

I have read and understood the rules. I understand breaking any rules could end in disqualification. **THE JUDGES DECISION IS FINAL**

Nomination is \$50-00 if paid before 1st November 2012 or \$65-00 if paid after this date.

Lodge form and cash payment to: Albany Engineering
39 Roundhay Rd (off Lower Denmark Road)
ALBANY WA

Signed; _____

Contact details; Name _____

Address _____

Home Phone _____ Mobile _____

Email _____